

Landchat

Landcare in the Southern New England, No. 110, January - June 2017



Southern
New England
Landcare

Our mission is to **lead, connect and enable** our communities to meet their sustainable living goals.

Welcome

Welcome to Landchat 110. It's been a little while since we've produced Landchat in this format and it really is a bumper issue!

Financial members should receive a full colour hard copy of this edition in the mail to enjoy at their leisure. Non-members are able to retrieve a copy from our website www.snelandcare.org.au under the news menu.

Remember, if you want regular updates on coming events, please sign up to our more regular e-News at the bottom left of our front page at www.snelandcare.org.au. You can also see what's coming by visiting the events listing at our site.

We welcome your feedback on Landchat, and we especially welcome articles from members who wish to tell their landcare story, or advertising from local businesses. Please contact us at the office on mail@snelandcare.org.au or on 02 6772 9123.

Diary Dates

Walcha Member Muster	7th June
The What Why Wow of Project Planning	7th June
Soils workshop with Dr Christine Jones	8th June
Uralla Rivercare Plan Launch	14th June
State Landcare Award nominations close	16th June
Youth Funding opportunity closes	26th June
Digital Mastery with Greg Alder	29th June
NSW Landcare Conference earlybird rego	30th June
Science in the Paddock	26th July
LNSW Volunteer Funding closes	31st July

No. 110, January - June 2017

Locals take out regional landcare awards

More than 120 people attended a dinner at University of New England's historic Robb College Dining Hall on Thursday 4th May, to celebrate the efforts and achievements of Landcare award finalists from around the New England and North West regions.

New England North West Landcare's, Mrs Stephanie Cameron, took part in the event as Chair of the host organization.

"Last night, we celebrated the efforts and achievements of so many wonderful volunteers," said Mrs Cameron.

"What they do to improve the sustainability of local environments, whether it be on-farm or in our urban spaces, is nothing short of amazing," she said.

"Last night we got to see just a snapshot of what they have been achieving, and it's so exciting to know that our region is in such good hands," she said.

In the New England region, winners were:

- Rebecca Smith from Guyra, who took out the Individual Landcarer Award
- Armidale High School Bushcare Group BC², who took out the Junior Landcare Team Award
- Kelly Walsh from Glen Innes, who took out the Young Landcare Leader Award
- Jane O'Brien from Inverell, who took out the Landcare Facilitator/Coordinator Award

Continued on page 2

Below—New England Regional Landcare Awards recipients from left, Sally Wright (presenter), Fiona Smith, Jane O'Brien, Harry White, Jenny Cracknell, Kelly Walsh, Tegan Skaines, Roy Bruce-Cone, and Mahri Koch.



‘Landcare Adventure the best so far!’

Continued from page 1

- The Aboriginal Reference Advisory Group, who took out the Indigenous Land Management Award, and
- Inverell Community Gardens, who took out the Landcare Community Group Award.
- Mahri Koch was Highly Commended in the Individual Landcarer Award.

North West region winners were:

- Brett Coble from Tamworth, who took out the Individual Landcarer Award
- Tim Duncan from Tamworth, who took out the Young Landcare Leader Award
- Gwydir Shire Council, who took out the Partnerships with Landcare Award
- Scott and Sarnia Walker & family from Upper Horton, who took out the Innovation in Sustainable Farming Practices Award, and
- Adventure Landcare Tamworth, who took out the Landcare Community Group Award.

NENW Landcare and its eight member networks from across the region, would like to congratulate all the award finalists and recipients and thank them for their hard and consistent work to better our region.

“We would also like to acknowledge the assistance of Northern Tablelands Local Land Services and the North West Local Land Services for their support and assistance during the last 12 months. It’s with their help that we can enable such great work on the ground,” said Mrs Cameron.

All regional award recipients will progress to the State Landcare Awards to in late October at the NSW Landcare and Local Land Services Conference.

On 4-5th May, Southern New England Landcare hosted the biggest event on the landcare calendar for 2017.

The two-day event was themed ‘Farming Smarter Communities’ and showcased a number of initiatives that Southern New England Landcare sees as key to facilitating thriving, sustainable communities.

Karen Zirkler, Executive Officer at Southern New England Landcare, was excited by the way the program came together.

‘Regenerative farming was the first topic on the program presented by Colin Seis, a farmer from the Gulgong area who has been experimenting on his own place for 30 years,’ Karen said.



‘Participants had the opportunity to discuss and question the science behind Colin Seis’ work with Dr Maarten Stapper from BioLogic AgFood,’ Karen said.

At the University of New England’s ‘Kirby’ Smart Farm, scientists and local landholders held sessions on how they are working smarter together, to achieve sustainable outcomes.

Topics included soil health, ground layer biodiversity under different grazing systems, fire-stick farming at ‘Wattleridge’, weed technologies for farms and mobile sprouted feeding systems.

‘UNE researchers are a real asset to our farming community,’ said Sara Schmude, Landcare Coordinator with

Left – David Henderson leads the panel session with Colin Seis (middle) and Dr Maarten Stapper (right).

Below – participants crowd into the Historic Robb College Dining Hall on the morning of Day 1.

Bottom – Fodder Solutions presented their display outside the SMARTFarm facility.



Southern New England Landcare.

'I'm really passionate about finding pathways for building relationships and creating more experimentation opportunities between farmers and researchers,' Sara said, 'so these sessions were designed to be interactive and pro-active.'

Evaluations of the Day 1 program were positive, with 50% of the 50 survey respondents saying they would be reviewing their management practices when returning home, and 50% of the 50 survey respondents saying they would implement some of these ideas in the near future.

"Good balance, great program and presentation, information rich. Thank you," said one respondent.

Day one wrapped up with the Regional Landcare Awards Dinner, where winners were announced in seven categories, across the two regions involved. The Awards Dinner was held at UNE's historic Robb College Dining Hall, with entertainment by local jazz band Ash Hall Trio.

On day two, Uralla businesses and community groups had a chance to showcase their stories including the Alternate Root Café, New England Brewery, Uralla's Z-Net Energy group, and the New England Foodie Trail.

David Henderson, President of Southern New England Landcare, was keen to hear participant's views on how to 'farm smarter communities', the topic of a facilitated session in Uralla.

'It's important that we recognize and duplicate, wherever possible, the initiatives that make regional Australia stronger, and I believe we have some of those great initiatives right here on our doorstep,' David said.

The event concluded with lunch in Uralla and a stroll along Dumaresq Creek in Armidale, to view the great work being done by Armidale's Urban Landcare Groups.

On evaluating the program for Day 2, one survey respondent said, "The enthusiasm of the Uralla people to encourage start-ups and then support them is outstanding."

When asked what they liked most about the day, participants said:

- It was great as usual
- A well presented day with many

varied enterprises

- Well put together
- It was perfect pitch.

This was the 18th New England North West Landcare Adventure, an event that attracts between 100-150 farmers and community members.

Landcare networks of the region take turns to host the event. This year, it was hosted by Southern New Landcare Ltd with funding and support from NENW Landcare Network Chairs Inc, the RLF Program, the National Landcare Programme, NSW Environmental Trust and Landcare NSW.

Check the video at <https://snelandcare.org.au/landcare-news/latest-news.html>.



Below – Rachel Doran (middle of image) presents her start-up story at The Alternate Root Café in Uralla.

Middle left – Deb O'Brien of Uralla presents on her New England Foodie Trail start-up.

Middle right & bottom – participants workshop the question 'How could we best connect and co-create to Farm Smarter Communities?'



Landholders inspired at Guyra Member Muster

The 'Soilkee' soil renovation technique was demonstrated to a sizeable gathering during the 'site visit' component of SNElandcare's Member Muster at Guyra on 22nd February.

Participants were keen to see the 'Soilkee' machine and all reported that the presentations and field observations gave them a better understanding of the importance of stimulating soil biology and how the 'Soilkee' renovator could do this.

This site visit reinforced or added to the knowledge of most participants, giving them ideas for changing or further modifying what they do, or the machinery they use, on-farm.

More inspiration was provided in presentations from Michael Taylor and Rebecca Smith.

Having received SNElandcare's 2014 John Winter-Irving Bequest, Michael described his experiences and learnings from attending the Australian Forest Growers 2016 Biennial National Conference in Launceston.

Michael participated in lectures and field visits by private forest growers and their industry, and presented on his family's forestry enterprises on their property.

Michael felt the conference gave him a better perspective on his activities, given the scale of his enterprise relative to others, and provided him with new contacts and inspiration to take his 'next steps' in growing his forestry enterprises.

This event was supported by funding from the Australian Government.

Top – the Soil Kee Renovator on display.

Right - Smelling the soil is said to be the best way to determine if healthy microbiology is present, however you need to know what smell you are looking for!



Rebecca Smith John Winter-Irving Bequest Recipient

Rebecca Smith gave an inspiring description of how she has mentored Armidale High School's Black Creek Bushcare (BC²) Group.

The Group is made up of students from years 7-11 who have begun regenerating the weed-infested upper reaches of Black Gully behind the Gymnastics Hall, participate as mentors at the annual Frog Dreaming Youth Conference, continue to develop the school wetland and other plantings at the school, and are looking at developing bee-friendly gardens and environmental peace activities.

Rebecca has not only had a central role in supporting and educating Armidale High School's students in environmentally-responsible ways, but has previously supported students at Guyra Central School, jointly initiated and continued to actively support the annual Frog Dreaming Youth Conference, assisted the Uralla Rivercare Group with community consultation and

their creek walk, run the Discovery Program for NSW National Parks and Wildlife Service and supported restorative local womens' activities.

Rebecca's active roles in community-based environmental leadership, the development of sustainable natural resource management practices among those she influences, delivering community-based Landcare education, participating in events supporting or promoting sustainable agriculture and natural resource management, as well as her commitment to excellence and leadership in 'landcare' and personal development have earned her the 2016 John Winter-Irving Bequest Award.

Congratulations Bec on a well-deserved award. Southern New England Landcare trusts it will support and inspire you.

Below – Bec Smith is congratulated by David Henderson, SNE Landcare President (left) and Michael Taylor, the 2014 Bequest recipient (right).



No. 110, January - June 2017

Walcha Member Muster focussed on *Art in the Landscape*

How can art in our rural landscapes engage, inform, educate, or enable us to build identity, skills and knowledge and thrive as a community?

This was the focus question of the Walcha Member Muster on Wednesday evening 7th June.

Guest presenters included Sandra Welsman, founder of 'LandArtFarm' near Armidale, Steven King, artist and landcarer, and Mayor of Walcha Eric Noakes who is also a long-time landcare member.

"The evening kicked off with short presentations from each of our guest speakers," said Karen Zirkler, Coordinator with Southern New England Landcare.

"This was the inspiration for a session where guest speakers mixed it up with participants in a workshop setting designed to network, share, and harvest the learnings of the last 25 years in our region," she said.

All members of SNE Landcare and their friends are invited to these fun and informative evenings, which are held quarterly, normally in February, May, August and November. Watch eNews for upcoming Member Musters.

Meet Sylvia Hobbs Flight Centre Armidale



Above - Allow Sylvia Hobbs of Flight Centre Armidale to take care of all your travel needs, and together you will be helping landcare in our region financially at no cost to you!

Members who attended our Christmas 2016 Member Muster will remember meeting Sylvia Hobbs of Flight Centre in Armidale, where she inspired many of us with her work in travel and what she could offer SNElandcare.

Flight Centre Armidale supports and sponsors our organisation. Bookings taken through Sylvia Hobbs that mention Landcare, trigger a kickback to Southern New England Landcare.

Sylvia recently organised accommodation for some of the Landcare Adventure participants. This has resulted in funds of \$374.40 being returned to Southern New England Landcare for use in enabling landcare projects in our region! Here, we interview Sylvia to find out a bit more about her background and why she is so keen to work with us.

SNElandcare: How long have you worked in the travel industry and where have you worked and travelled?

Sylvia: This is my 16th year of working in the Travel Industry as a registered Travel Agent in Australia. I was in the UK for five years and then I went onto Tanzania East Africa for another five years. I have been to approximately 40 countries all

over the world and have met the most wonderful people, been to the 'must do' places and eaten some really 'interesting' food!

SNElandcare: What were some of the highlights of your travel industry experiences before coming to Flight Centre here in Armidale?

Sylvia: There are so many. I first fell in love with Adventure Travel while trekking in South America and the Himalaya for four weeks at a time, and with Luxury Travel while skiing in the Alps with my own butler and in-house chef! But most of all the awe-inspiring people and diverse landscapes of Africa from the snow-capped peaks of Mt. Kilimanjaro to the plains of the Serengeti and tropical beaches of Zanzibar, the Spice Island, are hard to beat!

SNElandcare: What attracted you to working for Flight Centre in Armidale?

Sylvia: Flight Centre is Australia's largest and independently Australian owned Registered Travel Agency. Being Australian owned means we don't have to bend and bow to overseas conglomerates and can make our own decisions based on our traveller's wants and needs.

Being a country person at heart and coming home to Australia in 2013, I moved to Uralla to be with my family. With my personal and professional work experience I wanted to share my knowledge and passion for travel with the people of New England so Flight Centre was the perfect choice!

SNElandcare: Philanthropic fund raising has been an integral part of your work with global travel. How does that work? What are 'fundraising holidays'? And how do you see this working in with an organization like Southern New England Landcare?

Sylvia: It is important for me to be able to do more than just book travel. Being a Travel Consultant means I can offer a whole travel experience with my personal hints and tips. Through travel I can also give back at no extra cost to you. With 'Fundraising Travel' we can make a big difference to local and global communities

by simply choosing to make a difference without any extra effort. Donations made through travel have helped provide some of the basics like clean drinking water and ablution facilities in the poorest of communities and help support local projects with Southern New England Landcare that would otherwise go unfunded. Imagine the differences we would make by simply booking your travel that you would normally do anyway, with me!

SNElandcare: How people can support SNElandcare through you at Armidale Flight Centre?

Sylvia: Simply give me a call or email and tell me you are a friend of SNElandcare and I will donate back to SNElandcare. Local, domestic or Internationally I have everything you may want to see and do at my fingertips. Just call me, it really is that simple. For example two families traveling together booked their International flights with me and I donated back \$180 to SNElandcare for just that one booking. Imagine how much we can fundraise together over a financial year!

SNElandcare: And what sorts of opportunities could SNElandcare develop for groups of people through you at Flight Centre Armidale?

Sylvia: Group travel is a wonderful experience and there is so much fun to be had. Sharing travel experiences with like minded people brings a lifetime of memories and friendships. Group travel can be tailor-made according to your own requirements or as part of a larger group with a set itinerary. Either way there are a lot of bonuses and benefits that you wouldn't otherwise get travelling independently.

SNElandcare: Thank you very much Sylvia. And here's to some wonderful adventures for SNElandcare with you at Armidale Flight Centre.

**FLIGHT
CENTRE**

Hot topic: Soil Health

Harnham Landcare hosts Dr Christine Jones

Harnham Landcare Group hosted and subsidised a successful 'Five Principles for Soil Health' day at Kentucky Hall on 9th February 2017.

Some 40 people attended the day, to hear Dr Christine Jones outline how photosynthesis, microbes and diversity are all important mechanisms supporting soil health. Attendees came from the immediate locality as well as from the Lismore and Wallangra areas.

Lively discussion of other ideas helped clarify Christine's messages and made the content of the day relevant to livestock and human health, pasture management and grazing options.

Thoughts and suggestions were forthcoming for possible follow-up events and sharing with other Landcarers in adjacent regions.

Right top – more than 40 people attended the workshop with Dr Christine Jones at the Kentucky Hall, which was organised by members of Harnham Landcare Group.

Workshop with internationally-renowned soil ecologist Dr Christine Jones

Dr Christine Jones will deliver her 'Five principles for restoring soil health' workshop on-farm at "Camaroo" Gravesend from 9am to 3.30pm on Thursday 8th June 2017. See the results of multi-species crop and four stubble management methods trialled on-farm. Cost: NSLA Members Free, Non Members \$30. To book contact Jodi at Northern Slopes Landcare Association on 02 6724 2052 or [rlf@gwydir.nsw.gov.au](mailto:rjf@gwydir.nsw.gov.au).



Locals attend pasture cropping field day at Ashford

On the 8th March, Colin Seis delivered a field day on pasture cropping at Ashford, hosted by Gwymac Landcare. On arrival, it was evident there were several Southern New England Landcarers in the crowd, pictured here with a machine that was demonstrated on the day! A great day was had by all.

Right bottom – No less than nine forward-thinking Southern New Englanders attended the pasture cropping field day at Ashford with Colin Seis, which was organised by GWYMAC.



SNE Landcare Board progress key issues

Southern New England Landcare has a new board elected at the AGM in November. Congratulations and thank you to the following board members for their commitment to landcare in our region:

- David Henderson, Director & President.
- Steve Harvey (Dangarsleigh Landcare Group), Director & Vice President.
- Bevely Stubberfield (Uralla Rivercare Group), Director & Treasurer.
- Jill Moore-Kashima (Soil Health Forum & Balala-Brushgrove Landcare Group), Director.
- Bill Perrottet (Malpas Catchment Group), Director.
- Peter Metcalfe (Dumaresq Landcare Group), Director.
- Bryan Johnston (Armidale Urban Rivercare Group), Director.

Karen Zirkler has been appointed the roles of Public Officer and Secretary. Members who wish to contact a board member are encouraged to do so, and invited to contact our office to obtain their contact details: mail@snelandcare.org.au or 02 6772 9123.

The board has been busy with two meetings so far in 2017 with some exciting key outcomes outlined below.

Groups and their funds now under SNE Landcare

The closure of SNE LCC Inc has now been formalised and completed, with cancellation of the ABN and publication of the closure in the NSW Government Gazette.

All groups have been ratified as sub-groups of Southern New England Landcare Ltd, including two new groups: People's Park and BC², both urban groups in Armidale. This makes a total of 31 groups that now fall under the banner of Southern New England Landcare Ltd! While

Farewell Des, Charlie & Christine

During March, Southern New England landcare farewelled two key staff members, and welcomed a new member of the team.

Southern New England Landcare's Project Officer, Des Andersen, has taken a full time position with Uralla Shire Council. Des was instrumental in enabling all our revegetation projects with individual landholders. We thank Des for his hard work and commitment to landcare and wish him all the best in his new role.

Our Local Landcare Coordinator of 12 months or so, Charlie Carruthers, has unfortunately for us, been 'head hunted' into a fisheries role. We know this is Charlie's passion so we farewell him with mixed emotions too, as he really gave us his all for the 12 months we had him in Landcare.

Christine Davis, our Regional Landcare Facilitator based in Glen Innes, has also resigned from her position with New England North West Landcare. All the best Christine and thanks for all your support during the last two years.

The changes have promoted a staff 're-allocation' at SNE Landcare:

1. Karen Zirkler is now five days per week in the roles of Executive Officer (3 days per week), and Local Landcare Coordinator (Rural) for two days per week.
2. Sara Schmude is four days per week in the the Local Landcare Coordinator (Urban & Youth) role. Sara will also play a role in organising key events for members.
3. We also welcome a new staff member, Struan Ferguson. Struan has loads of volunteer experience with Armidale Tree Group. Struan will undertake our Administration Assistant role for an average of three days per week, and will likely be the first person you speak with if you call our office.
4. Ruth Tremont is now our main revegetation project officer, working on our Environmental Trust Projects for an average of two days per week.
5. Shane Andrews remains as the Agroforestry Project Coordinator for about a day a week.

some groups are in a long-term 'hybernation', others are rejuvenating and undertaking significant activities.

We have successfully brought all funds belonging to our member landcare groups across to Southern New England Landcare Ltd. All group funds are coded separately and identifiable. If your group would like to know their bank account balance or utilise funds for a group event or project, please contact us on 02 6772 9123 or mail@snelandcare.org.au and we'll let you know how.

New insurance cover for groups

A new insurance policy has been obtained through Landcare NSW, which has significantly reduced the cost of insurance, at the same time, providing better coverage for all members and sub-groups.

New Partnership Account

Southern New England Landcare now has an S3 Partnership account with Regional Australia Bank. Members

are encouraged to nominate Southern New England Landcare as their preferred community organisation so we can take advantage of the financial rewards RAB offers us!

New office location

The office of Southern New England Landcare will soon be relocating to new premises on the ground floor of Hanna's Arcade in Armidale. Staff are very excited by this, and wish to thank Hanna's for their participation in negotiations to this point. The move is likely to take place in late July or early August. Come and visit us!

New standing item on meeting agendas

There is a new standing item on board meeting agendas for Board members to raise any issues for discussion. Members are encouraged to contact a board member if they wish to have an item included. Contact our office to obtain board member contact details: mail@snelandcare.org.au or 02 6772 9123.

New memberships growing

Our new membership renewal process via our website is working well so far, with 114 current financial members. Members are reminded that renewals will be automatically generated by the site and you will receive an email when it's your time to renew.

You can check your membership status any time by visiting the site and clicking on 'Member Profile' under the Membership menu item. Contact the office if you have trouble and we are happy to help.

Remember your login details as in the coming months we are planning to evolve the 'member only' areas of the site to provide members with access to more resources and further benefits.

We welcome new members any time by visiting www.snelandcare.org.au/membership/membership-signup.html and choosing your preferred membership level.

Armidale Regional Council Supports Landcare with MOU

Armidale Regional Council signed a Memorandum of Understanding (MOU) with Southern New England Landcare Ltd. The recommendation was adopted at Council's ordinary meeting on 1st March.

"For many years Council has supported SNEL's Armidale Urban Planting Maintenance Project and the Malpas Catchment Project," said Council Administrator Dr Tiley.

"The Memorandum of Understanding commits to a continuation of the funding towards these programs for a period up until at least the 2018/2019 financial year. It also includes financial support of the SNELandcare Community Resource Centre."

The Armidale Urban Planting Maintenance program is primarily aimed at maintaining the healthy condition of various biodiversity sites in Armidale. At the same time, it engages with a broad cross-section of the Armidale Community as volunteers and raises community awareness of how biodiversity is pivotal in maintaining ecosystem function and health.

Since 1998 the Malpas Catchment Project has delivered activities and works to improve quality in the Malpas and Guyra Dams, and the MacLeay Catchment. It has included the provision of Council funding to SNELandcare for the employment of a part time Malpas Catchment Officer. The project has improved water quality, educated school aged children about water quality monitoring and offered community activities to promote the importance of wetland and riparian management and rehabilitation, and to support healthy fish habitat. All of these activities ultimately contribute to reducing sediment input into the waterways of the Malpas Catchment and Council water storages.

SNELandcare is an Armidale based not-for-profit community network that leads, connects and enables landcare activities in the Southern New England Region region by harnessing the power of community.



Below – Southern New England Landcare members at the Dumaresq Creek plantings during signing of the MOU with Armidale Regional Council.



Captivating Urban Projects

'One Tree Per Child' program

From Frog Dreaming to Dangar's Lagoon – 12,700 trees planted with over 600 members of our local community in this great collaboration with Armidale Tree Group!

It's hard to resist being inspired by Costa Georgiadis (host of Gardening Australia and known for his wild beard) to plant a tree. And that's just what we did – 1,200 trees planted in the name of Koala habitat at UNE's Newholme Field Laboratory during Frog Dreaming 2016.

This event was the launch of a great collaboration between Southern New England Landcare, the Armidale Tree Group and our extended community of over 600 passionate tree planters.

Within six months of getting the go-ahead from Jon Dee (founder of Planet Ark and National Tree Day, and now with the 'One Tree Per Child' program) we managed to plant 12,700 trees in various locations in and around Armidale.

Armidale Tree Group (ATG) took the opportunity to launch their program 'Every Tree Counts' with a massive Urban Forest planting along the eastern reaches of Armidale's Dumaresq creeklands. Here the group and its supporters, among them, Armidale Rivercare Group members, were successful in planting more than 4000 trees with approximately 250 students from six local schools.

Armidale High School (AHS) was a stand out in the project with their commitment to planting 2000 trees within the school and ag farm

grounds. 'Individual Landcare Award' winner and AHS Agriculture Teacher Bec Smith gleaned help from the school community in an effort to both beautify and build awareness around the benefits of native plantings.

"Once the students got their hands dirty, they were captivated by the idea of making a contribution to their school community and to their local environment," said Bec.

Bec also facilitates the award-winning school Bushcare group known as BC2. This group has played an integral part in planting and maintaining Manna Gums (adjacent to the Armidale Cemetery) and as part of the project has planted 500 *Eucalyptus viminalis* with follow up maintenance works planned for spring.

Other plantings included:

- 2,200 at Dangar's Lagoon (tree lane along road north of Lagoon)
- 1,000 at Black Gully at the Black Gully Music Festival with 120 Armidale City Public School students
- Enhancement plantings in the HiCUB sites by Helen Webb (People's Park Landcare Group).

Great efforts by our main collaborators in making it all possible – Jon Dee, Jen Quealy and Costa Georgiadis, Dave Carr, Bec Smith, Iestyn Taylor from Northern Tablelands Local Land Services, Armidale Regional Council and UNE School of Environment and Rural Science.

Check out Costa in action at Frog Dreaming either here <https://www.youtube.com/watch?v=5-DWi8fNX6k&t=1s> or at our website.



Left top - The plantings at Armidale High School.

Left bottom - Black Gully plantings.

Far right top - the urban landcare poster.

Far right middle - AURG's Community Engagement Planting day.

Council gives \$1000 towards Guyra planting

Armidale Regional Council has offered to support a community planting in the Guyra urban space to the tune of \$1000. Dr Ian Tiley made the announcement on signing the MOU between Council and SNElandcare in March. Landcare Coordinator and Guyra local, Sara Schmude is liaising with locals to put a plan in place for the planting.

AURG Community Engagement Planting

Members of the Armidale Urban Rivercare Group (AURG) alongside volunteers from Sustainable Living Armidale (SLA) and local residents joined together to conduct restoration and regeneration works adjacent to Niagara Street, along the western reaches of Dumaresq Creek (pictured right).

Held in October the event involved woody weed removal, site preparation, a day to plant 900 seedlings, and follow up maintenance.

Bookmarks available

In the process, the group developed a colourful bookmark to promote biodiversity works and volunteerism along the creeklands. We encourage you to drop by the office and pick one up for free.

This project was supported with funding from the National Landcare Program through Northern Tablelands Local Land Services.

Urban Poster

SNElandcare Coordinator Sara Schmude recently assisted our urban groups in Armidale to produce a stunning poster (right middle) depicting all the amazing works they

are undertaking.

Our new Urban Landcare poster has done some miles at events around Armidale these past months, including:

- Restore, Regenerate, Revegetate conference at UNE
- UNE Landcare/AURG planting day

- Presbyterian Ladies College community week
- Armidale High's creeklands walk.

Poster appearance fees are a cup of tea and chat about biodiversity so if your group is interested in booking this showpiece please make enquiries to sara.schmude@snelandcare.org.au or on 02 6772 9123!



Uralla Rivercare Group launches new rivercare plan

The Uralla Rivercare Group have utilised National Landcare Programme funding through Northern Tablelands Local Land Services to develop a new River Plan for their activities to help restore and maintain the Uralla Creeklands.

This exciting development records past actions and projects of the Uralla Rivercare Group and lays the foundations for what the Group might continue to do and how they will interact with the community in future.

A morning tea to launch the new plan will be held on 14th June behind the Uralla Visitor Information Centre.

Contact SNElandcare on 02 6772 9123 if you would like to attend or find out more.

Rural Projects Power Along

Moths, Magpies & Marsupials project completed

SNElandcare's *Moths, Magpies and Marsupials* – Promoting on farm Biodiversity project of 2014-16 has been completed. Heartfelt congratulations to the 12 landholders who were involved in this project!

Thanks also to the NSW Environmental Trust for their understanding (that it's a hard call to plant seedlings when weather conditions don't suit) and providing an extension of time. Drought conditions prevailed for most of 2014-16 but as we approach mid-2017 the goals for this project have been achieved.

The *Moths Magpies and Marsupials* project has protected 309 ha of remnant vegetation, and planted 13,860 native seedlings to create 16 ha of corridors of native vegetation. Works have been protected with 9 km of fencing.

Bird surveys were conducted across 12 properties from south of Walcha to the north and east of Armidale. All properties were surveyed by ornithologist Andrew Huggett in late autumn-winter and again in spring of 2015.

Survey results promising

Both sets of surveys showed that it is the tough Magpies, Australian Ravens, Eastern Rosellas and Starlings that inhabit open sites to be planted. Among 5 to 9 year-old native plantings, these species were again present but so were others such as Red-rumped Parrots, Superb Fairy-Wrens, Yellow-rumped Thornbills, Yellow-faced Honeyeaters, Willie Wagtails and Noisy Miners.

Birds such as the Grey Shrike-thrush, Dusky Woodswallow, Leaden and Satin Flycatchers, Whistler, Robins, Varied Sitella, Speckled Warbler and

White-winged Triller only occurred in relatively intact habitats of areas of remnant woodland.

These results supported findings from bird surveys of earlier Environmental Trust projects and confirm that it is best to manage existing remnants first (the bigger the better) and then plant substantial connecting corridors across individual properties which link up, across the landscape, with corridors and 'stepping stones' of habitat on other properties.



Promotion

To promote these ideas the *Moths, Magpies and Marsupials* project co-hosted a 'Biodiversity and Best Use Planning for small farms on the Northern Tablelands' field day in early 2016. About 30 people visited 'works in progress' to develop areas of native vegetation and protect riparian areas on a property near Guyra. Participants then had a go at planning their own 'dream habitats'.

Moths, Magpies and Marsupials also supported the 2015 *Frog Dreaming Conference* for local schools. Farm biodiversity was showcased at 'The Hill' by Lydie Taylor and school groups presented on their 'sustainability' projects. All the school groups participated in Group Action Planning for future biodiversity-based projects they could do, and explored the on-farm biodiversity across the hosting property.

And that's not to mention the contributions of the *Moths, Magpies and Marsupials* project to displays and public interaction at Uralla's 2014 Thunderbolt Festival and 2016 Show, as well as the 2015 Black Gully Festival at Armidale.

Many farmers have a strong interest in balancing food production while maintaining a supportive natural resource base. And the *Moths Magpies and Marsupials* project has successfully worked with local farmers to make significant local progress towards this goal.

Left top - Fencing protects a large remnant of core habitat from regular cattle grazing

Left middle - Attendees at the Biodiversity and Best Use Planning for small farms field day

Left bottom - A substantial native corridor planting connects remnant woodland with farm plantings.

Equiculture seminar excites local horse owners

Nationally acclaimed authors and experts on horse property management, Stuart and Jane Myers of Equiculture, delivered a seminar of value to horse owners and the environment in Armidale on Saturday 20th May 2017.

Twenty two participants attended the workshop – most from the local area, but some coming from as far as Tamworth and Alstonville.

"It was quite a riveting day," said local Landcare Coordinator Karen Zirkler, from Southern New England Landcare Ltd, who hosted the day.

"There was so much information, and every single bit of it was useful in our local situation," she said.

Native grasses are now sought-after by in-the-know horse owners to improve the health and well-being of their horses.

Stuart Myers assured participants that, "what we should be looking for is a high diversity of native plants in our horse pastures."

"It's for two reasons: diversity in our pastures is good for the health of the land, but also because horses are so different to cattle in their digestive systems – they need high fibre grasses with a lower sugar content, and native grasses are ideal," he said.

Stuart reinforced that the more horses you have per acre, the harder you have to work at it to get good pasture management. Horse owners need to start thinking about their land in the same way a farmer would. Using good pasture management techniques, a horse owner can move from spending a fortune per week on horse feed to spending virtually nothing because they become a grass farmer.

Stuart told participants, "You are now a grass farmer, and your horses are tools to help you work your grass farm... Overgrazing is your enemy... Get your horses off your grass when they are doing their other activities such as sleeping or supplementary feeding," he said.

The best investment horse owners can make is to have a good all-weather

surfaced yard where their horses can spend time when they are off the pasture giving it a rest. Alternatively, a 'sacrifice' area could be used, which you could also be simultaneously improving with mulch.

Confined horses still need lots of fibre – withholding fibre is when health problems start. They also need to be able to see and/or touch other horses, as well as being exercised and turned out once a day.

Stuart recommends if at all possible, keeping horses in herds since the benefits outweigh the down-side. Herds make management simpler and less time consuming.

Stuart discussed a number of topics throughout the day, including ways to simply rehabilitate bare areas, different grazing systems that are possible with horses, managing manure, managing water and managing equine obesity which is by far the biggest horse welfare issue today.

Southern New England Landcare is planning to host a 'planning and design' day for horse owners on small properties, to help brainstorm and map designs to suit their individual needs using the principles outlined in the seminar. Funding opportunities will also be outlined on the day, which is to be a Saturday in late July (TBC).

Potential participants should register their interest to us at mail@snelandcare.org.au or by phoning 02 6772 9123.

This event was supported by the Federal Government with funding through the National Landcare Programme.

Below – Stuart Myers discusses the importance of ground cover with workshop participants.



Help with trees on farms

Need a sounding board or some help to support your revegetation ideas and goals?

The New England Agri-Woodland Network (NEAWN) - a subgroup of Southern New England Landcare, has a project where local experienced farmers and tree-growers are available to mentor other farmers on any aspect of growing trees on farms.

To date, more than a dozen New England landholders have taken advantage of the service, and here's what some of them have had to say:

"I now feel that I have a way forward and can develop a plan that will contribute to sustainability in ways that are aesthetically pleasing, adding value to the property, benefiting the environment, improving productivity and the flexibility to diversify". Silvia Danielli, "Boolaan Burra", Thalgarrah.

"The suggestions and guidance of what species to try, planting locations, when and in what season to plant, as well as planting designs have all been of tremendous value". Helen Hine and David Menzies, "Castlebrook", Salisbury Plains.

"The mentors passed on valuable insights about the diversity in my forest and helped me see it as a whole ecosystem. They also provided useful practical tips which filled out much of my own opinions on where to go with its management." Rob Laurie, "Brigadoon", Nowendoc.

How it works

A key part of the service is the site visit where 2 or 3 local mentors visit a landholder's property. The visit focusses on your goals and how trees and shrubs (native or exotic) can be integrated to achieve those goals. A comprehensive discussion usually results in many different and often innovative ideas.

A site report is then produced by the mentors reflecting the options and discussion that took place during the visit. A process for ongoing support is then established. The purpose of the mentor is to help ensure that any projects implemented by the landholder have the best chance of success.

All mentors are local landholders who have been fully trained in the peer mentoring approach. They are also graduates of the Master Tree Grower Program and some have additional professional qualifications in various fields of NRM.

This approach was pioneered by the Otway Agroforestry Network who has been of great assistance to NEAWN. Its goal is to maximise farm productivity and diversity; increase knowledge and confidence in natural resource management; increase community networking

and continuous learning; increase the adoption of a "biological Infrastructure" on farms for expressed farm benefit; and retain long term local knowledge in farming systems.

More information

Anyone interested should contact Shane Andrews, the Agroforestry Project Coordinator, on 0427 753 808.

This project is supported with funding from the Australian Government, and in-kind contributions from the Australian Agroforestry Foundation.

PEER GROUP MENTORING SERVICE FOR AGROFORESTRY

FARMER TO FARMER EXTENSION

FOR FARMERS
MANAGING TREES
FOR REASONS THAT
MATTER TO THEM!

WHO ARE THE MENTORS?

- LOCAL EXPERIENCED TREE GROWERS
- MASTER TREEGROWER PROGRAM GRADUATES
- TRAINED MENTORS

WHAT SERVICES ARE PROVIDED?

- FARM VISITS SUPPORT YOUR IDEAS & GOALS
- TECHNICAL EXPERTISE AND INFORMATION
- SITE REPORTS

WHAT TOPICS CAN BE COVERED?

- Shade and shelter
- Farm aesthetics
- Natives or exotics
- Tree establishment
- Habitat
- Farm tree planning
- Native forest management
- Species identification
- Trees for timber

HOW DO WE KNOW IT WORKS?

Most significant change techniques tell the story...

The suggestions and guidance of what species to try, planting locations, when and in what season to plant, as well as planting designs have all been of tremendous value. Helen Hine & David Menzies, Castlebrook, Thraha.

The mentors passed on valuable insights about the diversity in my forest and helped me see it as a whole ecosystem. They also provided useful practical tips which filled out much of my own opinions on where to go with its management. Rob Laurie, Brigadoon, Nowendoc.

WWW.SNELANDCARE.ORG.AU

A group of the New England Agri-Woodland Network (NEAWN), a subgroup of Southern New England Landcare, and is also supported by the Australian Agroforestry Foundation.

Logos: Master Tree Grower, National Landcare, Southern New England Landcare, Australian Agroforestry Foundation.

Peer mentors attend training day at Quipolly



On 17th May, seven local landholder peer group mentors travelled to lower Quipolly to visit Mike and Janice Davey and their property.

Mike and Janice have been active agroforesters for some years.

The purpose of the trip was for our own agroforestry peer group mentors to inspect first-hand what a semi-mature planted agroforest looks like when it has been properly maintained with thinning and pruning occurring at the optimum times.

Shane Andrews, Agroforestry Project Coordinator with Southern New England Landcare organised the day which was enjoyed by all who attended.



“Whilst the majority of the plantings are managed for agroforestry, the biodiversity, shelter and aesthetic benefits to the whole farm are also tremendous,” said Shane.

Left top – Peer Group Mentors attended a training day near Quipolly in May, to see first-hand how a well-managed agroforest operates.

Left middle - recent thinning and pruning now allows those remaining trees to mature to their best potential.

Left - So that as little as possible is wasted, firewood is cut and stacked from the prunings and thinnings ready for the local market.



Farm Tree Advisory Service

Would you like some help designing or establishing trees and shrubs for your property? Don't know where to start? What to plant? How to do it?

We can provide you with very experienced landholders and technical experts to assist you with your ideas and goals.

This service is available for a small fee as the project is heavily subsidised by the Australian Government's National Landcare Programme.

State policy alerts

Changes to weed management in NSW

Weed management legislation is about to change across the State with the implementation of the new Biosecurity Act 2015.

The Biosecurity Act aims to better manage the negative impacts of animal and plant pests, diseases and weeds for the benefit of the people of NSW. It is expected the new Act will come into effect from 1st July 2017.

Biosecurity is currently managed under 14 separate pieces of legislation including the Noxious Weeds Act 1993. Streamlining these into a single Act will reduce red tape, simplify existing procedures and provide greater flexibility in managing biosecurity risks.

A fundamental principle of the new Biosecurity Act is that biosecurity is everyone's responsibility. This includes individuals, communities, industry and government. The values of shared responsibility will help to increase everyone's awareness of what they should and can do to manage biosecurity risks.

Weeds are a major threat to both our agricultural industries and our unique natural environment. They also impact on the price of food, human health through allergies including asthma, recreational activities and the larger NSW economy. The estimated cost of weeds on NSW agriculture alone is estimated to be \$1.4 billion annually.

A key concept behind this new legislation is that everyone has a General Biosecurity Duty (GBD). A GBD requires that anyone dealing with a biosecurity risk, whether it be weeds, pests or diseases, must ensure the risk is prevented,

eliminated or minimised. From a weed perspective this means landholders and managers must manage weeds on their land to reduce or prevent them impacting surrounding land.

Importantly, under the new Biosecurity Act, obligations on owners and occupiers of public land will be the same as the obligations on owners and occupiers of private land. This is a significant change from current arrangements under the Noxious Weeds Act where private landholders and local control authorities have more onerous weed control obligations than other public land managers.

"The first stage of implementation will be around educating the community on their obligations under the new legislation," said Wayne Deer, General Manager for New England Weeds Authority.

"The key message is to keep managing weeds on your land, prevent them spreading to neighbors and to keep an eye out for any new weeds appearing on your land."

For help with weed identification and management please contact us on 6770 3602, call into the New England Weeds Authority office at 129 Rusden St Armidale or visit us at www.newa.com.au.



Your opinions wanted on Travelling Stock Reserves Review

Landcare NSW is encouraging all Landcare group members to provide input regarding the management of Travelling Stock Reserves in your area.

Landcare NSW made a state-wide submission in December 2015 to the Local Land Services TSR Planning Framework 2016-21, and it is pleasing that our call for including knowledge from local landholders and Landcare members into the planning and management of TSRs has been heeded.

The submission can be viewed at <http://landcarensw.org.au/representation/submissions-to-government/>

The NSW Travelling Stock Reserves Review aims to determine which TSRs are still used or required for their original purpose and to determine if there are other values that they are used for today.

The review is the start of a complete mapping exercise of: Where they are? What are they used for? Who uses them? How often are they used?

The government is committed to maintaining a viable, well maintained and connected TSR network for the future. Having a complete and accurate map of TSRs – their function and land use across the state is vital in ensuring they align with Indigenous, conservation, livestock, production recreation and community priorities.

A public consultation paper has been released with input sought from the

Continued on page 17

Protecting your family, your farm, and your future

New legislation means Biosecurity Planning is a smart move

With changes in NSW biosecurity legislation on the horizon farmers are urged to make a Farm Biosecurity Plan a priority to protect their family, their farming business and their future.

"A detailed Farm Biosecurity Plan will also help protect your markets and your local community, and we can help farmers work through the planning process," said Steve Eastwood, Northern Tablelands Local Land Services District Vet.

"Biosecurity is about protecting the economy, environment and community from the negative impacts of pests, diseases, weeds and contaminants. Changes to legislation, due to be implemented in mid-2017, will require all farmers to meet a general biosecurity duty."

"Having a biosecurity plan in operation as part of your farm business is a good way to demonstrate that you are meeting that implied duty," said Steve.

Farmer and meat exporter, Andrew Carruthers from AD Commodities, worked with Northern Tablelands Local Land Services to organise a Biosecurity Planning Workshop in Armidale recently to discuss the anticipated changes in biosecurity legislation.

"Now is the time to get on the front foot, ring up your District Vet, and start talking about the new requirements," said Andrew.

"We have a meat export business and our interactions with trading partners have amplified for us the importance of biosecurity planning and the need to have a clear road map ready to respond in the event that a biosecurity breach does take place."

Andrew Carruthers advises fellow farmers to take advantage of the help Local Land Services can provide to farmers who are looking to implement or upgrade a farm biosecurity plan.

"Local Land Services has been

brilliant to work with and our District Vets are excellent. They have a wealth of knowledge and they are always willing to help farmers if they need some advice on how to get on top of the legislative changes that are coming into place," said Andrew.

The Local Land Services team can guide landholders through the preparation of biosecurity measures to prevent problems occurring, and help them understand what their general biosecurity duty is and how to meet it, while also planning effective strategies for dealing with pest and disease outbreaks that could threaten Australia's economy or the environment.

"However having a plan isn't much good if it's then just filed away in a drawer," said District Vet Steve Eastwood. "You need to make it a working document that is practical and user friendly."

"Local Land Services can work with landholders to implement simple procedures that are tailored to their particular business," said Steve.

For more information about preparing a Biosecurity Plan for your farm contact Steve Eastwood at Northern Tablelands Local Land Services on 02 6770 2000.

Continued from page 18

community. Read through the consultation paper at <http://open.lls.nsw.gov.au/TSR-review> and the discussion points raised and have your say on the future of the TSR network in NSW.

To assist in responding to the discussion points raised in the consultation paper, the government has created an online mapping tool to allow you to investigate TSRs in your local area. The mapping tool is available at: <https://trade.maps.arcgis.com/apps/webappviewer/index.2f2a0f1efae14f7cb79cf900d012ccc3>.

Complete an online submission at http://open.lls.nsw.gov.au/TSR-review/survey_tools/tsr-feedback, email your submission to tsr.feedback@lls.nsw.gov.au or post a hard copy response to Local Land Services, State Operations, PO Box 2105, Dubbo, NSW, 2830.

Submissions close at 5 pm Thursday 22 June 2017. To find out more about the NSW Travelling Stock Reserves Review visit www.haveyoursay.nsw.gov.au.



**Local Land
Services**
Northern Tablelands

Opportunities for members

2017 Landcare Awards Nominations open

Nominations are now open for the 2017 Landcare Awards and close on 16th June. If you or your group are involved in protecting or improving your local environment, farm, coastline, bushland, wetland, waterway, school, region, catchment or backyard, there is a category in this year's awards for you.

To find out more and make a nomination, please <https://e-award.com.au/2017/landcareawards/newentry/about.php>.

Youth funding opportunity

Applications are open for the NSW Government Youth Opportunities Program. The Program provides one-off, time-limited grants of up to \$50,000 to not-for-profit organisations and local councils for youth-led and youth-driven community projects that have a positive youth development focus. Applications must be submitted by 5pm on Monday, 26 June 2017.

Science in the Paddock Field Day

Wednesday 26th July 2017, Armidale.

Learn how measuring sap flow in plants could be applicable in landcare farming situations with ICT International. More information coming soon to www.snelandcare.org.au. Registrations essential to mail@snelandcare.org.au or 02 6772 9123.

Funding to assist landcare group volunteers

Regional Australia Bank is helping local Landcare groups achieve their goals through their corporate sponsorship to Landcare NSW.

Using the funds provided, Landcare NSW is offering grants of up to \$1,000 (incl. GST) to support our Landcare group members to assist their volunteers. To apply, simply complete and submit the <http://landcarenewsw.org.au/regional-australia-bank-funding/>. Applications close at 5pm on Monday 31st July.

State Landcare and Local Land Services Conference

The 2017 NSW Landcare and Local Land Services Conference will be held from the 25-27 October, at the Albury Entertainment Centre, Albury, NSW. The Conference is being hosted by Landcare NSW and Murray Local Land Services, and is being coordinated in partnership with local Landcare and community groups.

End of financial year bargain registration: Close 30 June
Earlybird registration: Closes 25 September

Registrations at <http://nswlandcareconference.com.au/>

Conference organisers are thrilled to announce that renowned science communicator, Dr Karl Kruszelnicki, will be the keynote speaker at the conference. Dr Karl is best-known for his weekly radio spot on Triple J, in which he answers listener questions about science in his unique and entertaining style. His appearance at the NSW Landcare and Local Land Services Conference is a highlight of what promises to be a memorable three days.

This conference is the premier event to showcase sustainability, Landcare and volunteering across NSW and includes the annual Landcare Muster and the NSW State Landcare Awards. Don't miss this chance to gather with around 300 people from Landcare and community groups, farmers, Aboriginal groups, industry and government representatives from across NSW and Australia.

The theme for the Conference is 'Sharing our Stories'. Conference topics will focus on agriculture, biodiversity, water and Aboriginal Landcare.

If there is enough interest from our region, Southern New England Landcare would be happy to coordinate travel and accommodation and seek out a subsidy to attend. Register your interest with us at mail@snelandcare.org.au or on 02 6772 9123 by COB Friday 23rd June 2017.

Regenerative Ag Tour to Victoria

Southern Blue have just launched their Regenerative Farming Tour to Victoria for later in 2017. As part of their program development, Southern Blue will be providing a sponsored position on the tour for an aspiring farmer. For more information visit www.southernblue.com.au/index.php/study-tours/regenerative-farming-tour/ or www.facebook.com/pg/SouthernBlueRegenerative/events/

Dung beetles

Deputy Prime Minister, Barnaby Joyce and Member for Page, Kevin Hogan recently announced new funding under the Rural Research and Development for Profit Programme to look at ways the farming industry can benefit from using dung beetles. Read the full article at www.northernstar.com.au/news/92-million-to-help-turn-dung-into-dollars/3177871/

Want to discover the ins and outs of eco-arts project planning?

A full day program of advice, networking and professional development for Landcare members, artists, community groups and anyone interested in creating an arts-based event. Arts have proven to be a very successful way to explore and address environmental issues. Come and investigate some possibilities!

\$50 full day program (inc all sessions, hand outs, lunch & refreshments)
9:30am-12pm The Project Brief
12-1pm The Project Budget
2-3:30pm The Project Plan
Bingara 6 June, Bundarra 7 June.
Book now on 6732 4988, ofce@artsnw.com.au, www.artsnw.com.au/whatwhywow

Digital Mastery Workshop

**From 9.30 to 2.30 Thursday
29th June 2017, at Uralla
Community Centre, your digital
& social media questions will be
answered!**



- Do I need social media?
- Why do some social media posts go viral?
- What are Facebook ads and how do I create one?
- How do I get more fans?
- Is Facebook good for business?
- How do I handle negative comments?
- What should I share on social media?

Presenter Greg Alder has handled the brand communications for famous brands around the world. His company manages over 50 social media profiles for clients.

Some of his posts on social media have been viewed by over a million people. On June 29, we have secured Greg's services to help you, our members, understand and master digital and social media.

Prior to the workshop, participants are asked to fill out a quick online questionnaire, to help Greg design the workshop to your needs.

Visit <https://gregalder.co/landcare-questionnaire/> and use the password LC-GAC-2017.

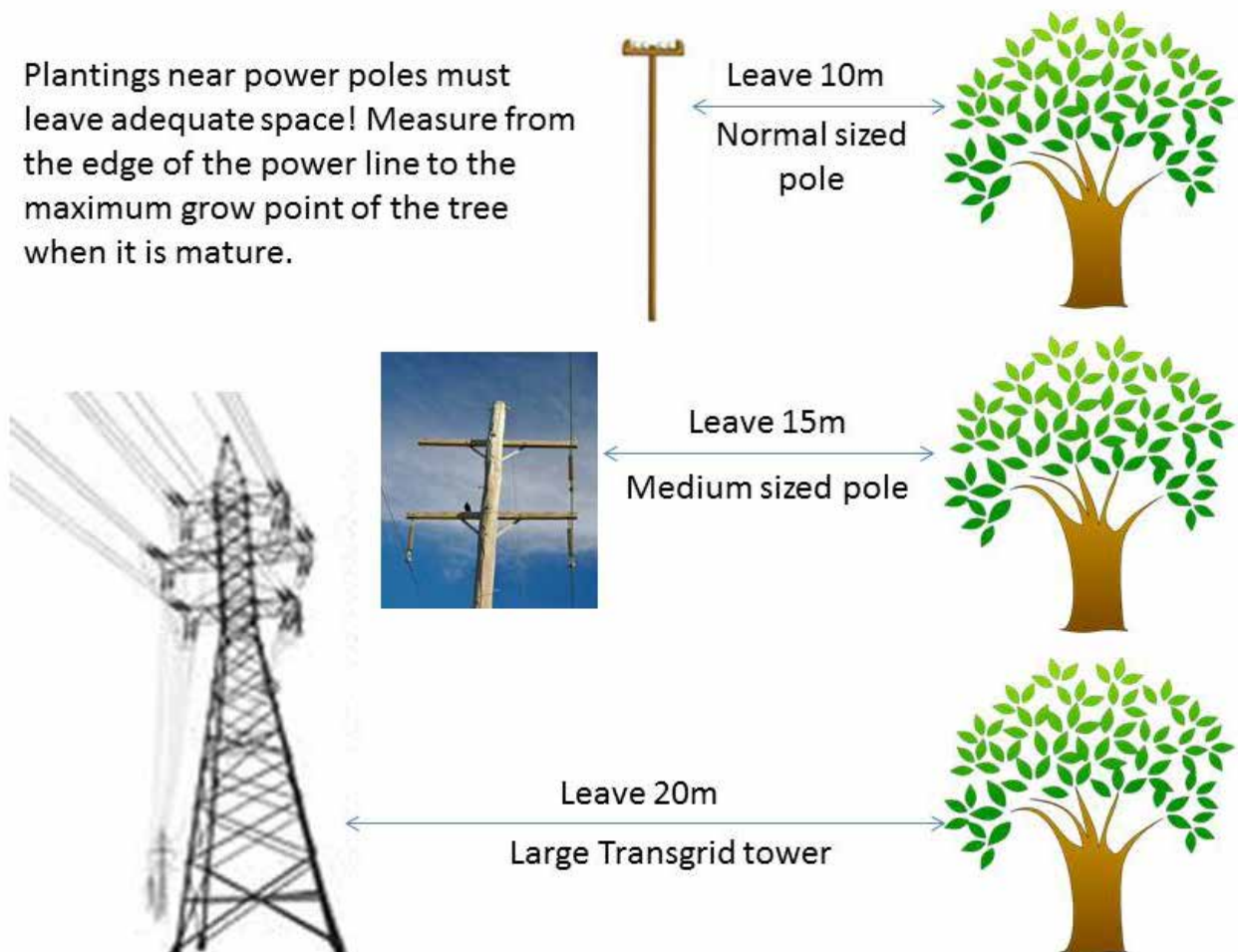
Members - free. Non-members \$20.

Bookings at <https://www.stickytickets.com.au/51899> or contact us on 02 67729123.

Beware power poles when planting!

Southern New England Landcare has had a friendly reminder from Essential Energy recently, regarding the distances required between landcare plantings and power lines. We have put together this diagram to illustrate to our members as a reminder! Note the distances required for different types of poles.

Plantings near power poles must leave adequate space! Measure from the edge of the power line to the maximum grow point of the tree when it is mature.



If undeliverable return to Southern New England Landcare,
Level 1, 3/119 Beardsley Street, PO Box 85, Armidale 2350.
Tel 02 6772 9123, mail@snelandcare.org.au.

Landchat
Print Post Approved
PP 255003/09214



Southern
New England
Landcare

PRINT
POST

POSTAGE
PAID
AUSTRALIA

Landchat

Landcare in the Southern New England, No. 110, January - June 2017



Southern
New England
Landcare

Acknowledgements

Southern New England Landcare is supported by the Northern Tablelands Local Land Services through funding from the NSW Government's Catchment Action NSW and the Australian Government's National Landcare Programme; Armidale Regional Council, Regional Australia Bank and Wesfarmers Federation Insurance.

Landchat presents a forum for the expression of a range of opinions. While every effort is made to publish accurate information, Southern New England Landcare and its employees do not accept responsibility for statements made and opinions expressed in this newsletter.



Need Insurance?

**Do you insure your farm,
equipment, car or household?**

We recommend Wesfarmers Federation Insurance, proud supporters of Landcare.

Mention you are a member of Southern New England Landcare, and 3% of the value of your premium is returned to SNElandcare to support projects!

Contact David de Ferranti on 02 6722 1755.

